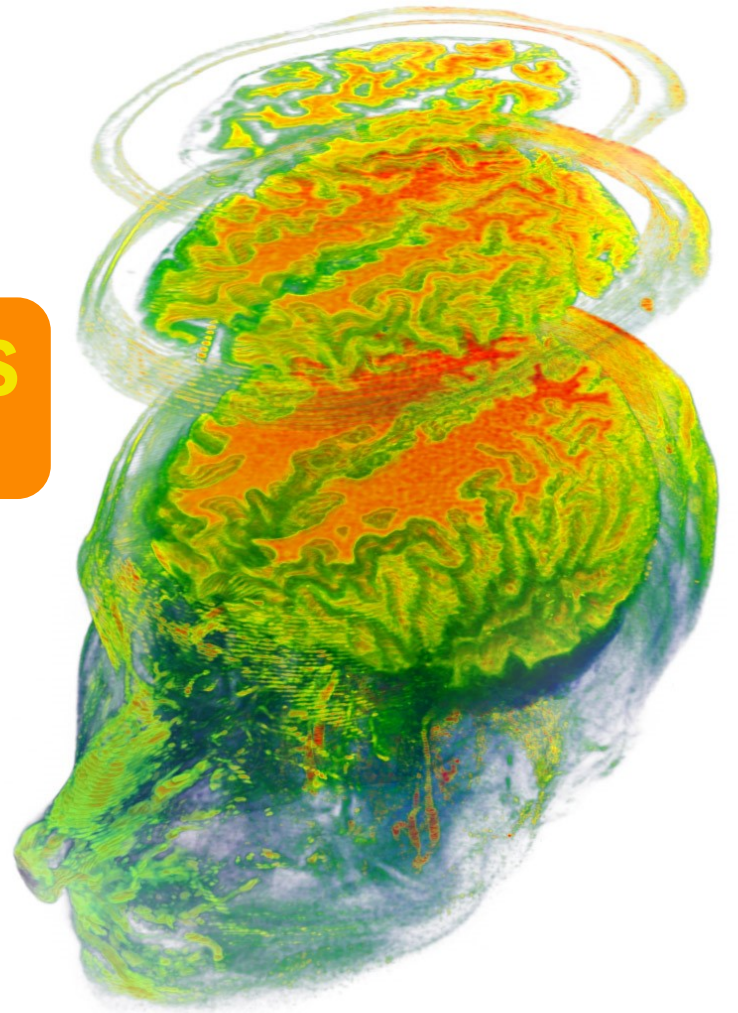


### NEUROSCIENCES SEMINAR SERIES FALL 2019 Tuesdays @ 4:00 pm

Center for Neural Circuits and Behavior  
Farquhar Seminar Room

- 10/01/19** **WEIZHE HONG** UC Los Angeles  
*Molecular and circuit mechanisms of social behavior*  
host: James Howe, j3howe@ucsd.edu
- 10/08/19** **JUDITH FAN** UC San Diego  
*Cognitive tools for learning and communication*  
host: Tim Tadros, ttadros@ucsd.edu
- 10/15/19** **JYOTI MISHRA** UC San Diego  
*Bridging the gap between neuroscience and the mental health clinic*  
host: Burke Rosen, bqrosen@ucsd.edu
- 10/29/19** **HELEN BATEUP** UC Berkeley  
*Synaptic changes in the striatum drive autism-related behavioral abnormalities*  
host: Jason Adams, jwa002@ucsd.edu
- 11/05/19** **JULIE SIEGENTHALER** University of Colorado, Anschutz Medical Campus  
*'Fibroblasts on my mind': The meninges in development, health, and disease*  
host: Meghan Rossi, mjrossi@ucsd.edu
- 11/12/19** **STEPHANIE PALMER** University of Chicago  
*Exploring behavioral and evolutionary constraints in early visual processing*  
host: Javier How, jhow@ucsd.edu
- 11/19/19** **RICHARD MOONEY** Duke University  
*From song to synapse: The neurobiology of vocal learning*  
Founder's Lecture in honor of Dr. Theodore Bullock\*  
host: Sam Asinof, sasinof@ucsd.edu
- 11/26/19** **DION DICKMAN** University of Southern California  
*Local and global homeostatic control of synaptic strength*  
host: Andre DeSouza, andesouz@ucsd.edu
- 12/03/19** **MURRAY SHERMAN** University of Chicago  
*A view of cortex from the thalamus*  
host: Megan Kirchgessner, makirchgessner@ucsd.edu
- 12/10/19** **ADRIENNE FAIRHALL** University of Washington  
*Multiplexed signals in dopamine*  
host: Jess Haley, jahaley@ucsd.edu



web: [neurograd.ucsd.edu](http://neurograd.ucsd.edu) | email: [neurograd@ucsd.edu](mailto:neurograd@ucsd.edu)

\*Founder's Lecture sponsored by the Neuroscience Education Research Foundation (NERF).

Neurosciences Graduate Program Seminar Series Committee

Students: Anja Payne, Tim Sheehan

Faculty: Joseph Gleeson, M.D. (Chair), Matthew Banghart, Ph.D., Richard Daneman, Ph.D., Tina Gremel, Ph.D., Jill Leutgeb, Ph.D., Lara Rangel, Ph.D.

Poster image courtesy of Burke Rosen